

SHOP  
ONLINE  
WITH US  
TODAY!



we deliver you discover

visit us at [www.nbsscientific.com](http://www.nbsscientific.com)

innovative lab solutions

collect - prepare - measure - manage - store your samples



📍 4 King's Bench Walk, Temple, London, EC4Y 7DL  
☎ 01223 603778  
✉ [info@nbsscientific.co.uk](mailto:info@nbsscientific.co.uk)  
🌐 [nbsscientific.co.uk](http://nbsscientific.co.uk)

## ABOUT NBS SCIENTIFIC

*Our mission, values and goals*

NBS Scientific is an innovative distributor for the life science industry in the United Kingdom. We offer a wide range of products to help researchers preserve sample quality during sample collection, sample preparation, sample management, and sample storage processes.



Our product portfolio includes: sample collection kits; sample stability reagents; pipettes and pipette tips; frozen sample aliquotters; rack thawing stations; PCR plates and deep well plates; tube handlers; 1D and 2D barcode readers; laser markers; tube processors; tube labelers; laboratory consumables (tube, caps and racks); (de)cappers; and heat sealers.

Overall, we provide the labware and equipment researchers need to discover new insights in the lab—insights that could change the landscape of public health, wellness, and safety around the globe.

When you choose to work with NBS Scientific—a global network of companies with over 10 years of experience in the life science industry—you’re choosing a trusted partner that understands the scope and significance of your research. That’s why we strive to provide you with the highest quality products and best possible service every day of the week.

Whether you’re searching for your first case of tubes or looking for alternative solutions in the lab, we’re here to help. Every step of the way.

## OUR VALUES

*The four fundamental ideas that drive our company*

### INNOVATION



We are constantly exploring new markets to supply you with the most innovative products in the industry.

### CREATIVITY



When customers ask us questions, we think beyond existing frameworks to help them solve unique challenges.

### QUALITY



We provide products and services that are produced and carried out under the strictest quality standards.

### SUSTAINABILITY



Our CSR program emphasizes sustainability and contributions to local and national charities.

## table of contents

<b>SAMPLE COLLECTION</b>	<b>4</b>
Sample Collection Kits & GenTegra Stability Reagents .....	5
GenSolve Extraction Kits & Collection Cards .....	6
<b>LIQUID HANDLING</b>	<b>7</b>
Pipettes .....	8-9
Pipette Tips .....	10-11
<b>SAMPLE PREPARATION</b>	<b>12</b>
Frozen Sample Aliquotters & Rack Thawing Stations .....	13
Shakers, Mixers & Stirrers .....	14-15
Scinomix BB Dropper & UPHO Bead Beater .....	15
<b>SAMPLE MEASUREMENT</b>	<b>16</b>
PCR Plates .....	17
Deep Well Plates .....	18-19
Centrifuge Tubes .....	20
<b>SAMPLE MANAGEMENT</b>	<b>21</b>
Tube Handlers .....	22
1D & 2D Barcode Readers .....	23-24
Laser Markers .....	25
Tube Processors .....	26
Tube Labelers .....	27-28
<b>SAMPLE STORAGE</b>	<b>29</b>
Sample Storage Tubes .....	30-33
Sample Storage Caps .....	34-36
Sample Storage Racks .....	37
Starter Packs & Tube Trial Packs .....	38-39
Cappers & Decappers .....	40-42
Heat Sealers .....	43
<b>TECHNICAL SERVICE &amp; CORPORATE SOCIAL RESPONSIBILITY</b>	<b>44-45</b>

## our brands

IAFYSI3G



**GenTegra**



**PFEIFFER**



# sample collection



brands  
**IVUS**  
Unique Lab Results  
**GenTegra**

## SAMPLE COLLECTION KITS & SAMPLE STABILITY REAGENTS

At NBS Scientific, we offer the urine sample collection kit from IVUS, which can be used to easily collect and preserve urine samples for downstream analysis in a microbiology laboratory.

We also offer GenTegra's full line of nucleic acid stabilization products, sample collection cards, and extraction kits. GenTegra's most popular product, GenTegra-RNA, is a water-soluble chemical matrix that immediately shields purified RNA from RNases. When dried, it protects RNA from extreme temperatures encountered during shipping. A GenTegra-DNA version is also available.

## SAMPLE COLLECTION KITS

Hygienic collection of urine and other biological fluids

COLLECTION KITS



### IVUS TOUCHLESS URINE SAMPLING KIT

- Facilitates clean, hygienic and sterilized urine collection for regular and advanced microbiological urine testing
- Uniquely designed collection tubes render sampling touchless, meaning no spills and no mess
- Kits contain everything patient needs for sample collection: urine beaker, vacuum tube, wet wipe and user manual
- Kits easy to open and instructions easy to follow
- Produced according to CE-IVD guidelines

## GENTEGRA STABILITY REAGENTS

RNA and DNA protection during shipment and long-term storage



PROTECT  
SAMPLES  
DURING  
SHIPPING!



### GENTEGRA-RNA

- Immediately stops RNase activity
- Prevents hydrolysis and oxidation, unlike freezing which only slows these processes
- Stabilizes RNA samples in the liquid or dry state for safer handling, shipping or long-term storage
- After storage or shipping, complete recovery of RNA samples is fast and easy—just add water
- In liquid form, GenTegra-RNA protects samples for up to 100 hours at 25°C and in dry state it stabilizes samples indefinitely at ambient temps
- Available in different formats: screw cap tubes, cluster tubes, microtiter plates or dry bulk

### GENTEGRA-DNA

- Protects DNA from hydrolysis and oxidation
- Stabilizes and protects DNA samples from extreme temperatures (-80°C to +72°C)
- After storage or shipping, complete recovery of DNA samples is fast and easy—just add water
- With GenTegra-DNA, samples show no degradation after 16 years at ambient temps
- Downstream applications include: transfections, quantitative PCR, gene expression, RRN profiling, NGS, genotyping, HLA typing, forensics
- Available in different formats: screw cap tubes, cluster tubes, microtiter plates, or dry bulk

STABILITY REAGENTS

## EXTRACTION & PURIFICATION KIT

For extracting and purifying high-quality, high-quantity dsDNA from DBS

### GENSOLVE DNA COMPLETE

- Compatible with dried blood spots (DBS) on GenPlates, GenSaver cards, FTA paper, GenCollect cards, Guthrie cards and all other filter papers
- Procedure takes 90 minutes from start to finish
- Yields of DNA between 50-360ng from 10ul of whole blood; yield varies depending on initial sample and normal variability between donors
- Reproducible with an average CV of 11% over 90 FTA discs containing 10ul of whole blood from 30 unique samples
- dsDNA recovered with GenSolve extraction is intact and approximately 35kb in length
- Two kit sizes available for 50 DBS or 100 DBS



## SAMPLE COLLECTION CARDS

Specimen collection cards for collecting, transporting, and storing blood samples at ambient temperatures

### GENSAVER CARDS

- For DNA analysis of blood samples
- Made of high-purity cotton
- Treated with new-to-market proprietary chemistry intended for long-term preservation of DNA from DBS at ambient temperature
- Treated cards stabilize DNA for at least 10 years with high-quality and quantitative recovery
- Chemistry compatible with direct PCR; no need for previous washing protocol
- All cards include cover part for identification information and paper part with 1, 2 or 4 printed circles for sample collection
- Cards can be custom designed to meet the requirements of specific applications
- Applications: forensics, genomics, transgenic identification, plasmid screening, STR and NGS, genotyping, animal identification, whole genome amplification, PCR, qPCR, direct PCR analysis
- Other collection cards available for short-term storage, preserving nucleic acids in biological fluids, extra protection for forensic samples against microbial growth and contamination



## liquid handling



### PIPETTES AND PIPETTE TIPS FOR CONTROLLED DISPENSING

Our comprehensive range of liquid handling tools and consumables from CAPP and Ritter Medical can be used to dispense liquids in a precise and controlled manner.

Looking for manual or electronic pipettes for single-channel or multi-channel work? We've got them. Or pipette tips for tools you already own? We've got those, too. In addition to our standard range of pipette tips from Ritter Medical, we also offer their range of robotic pipette tips which can work with larger automated systems like liquid handlers.



PIPETTES

## SINGLE & MULTI-CHANNEL PIPETTES

*For precise and efficient pipetting*



### CAPP MAESTRO ELECTRONIC PIPETTE

- Electronic single-channel pipette that offers advanced functions like multi-dispensing, dilution and mixing
- Includes self-explanatory full-color OLED graphic user interface
- Can easily store protocols and switch from one to another
- Equipped with long lasting lithium battery
- Can be used while charging
- Includes calibration and password setting functions
- Lightweight construction and ergonomic design
- Tip ejector works as finger rest for thumb; can rest thumb on tip ejector and activate the pipetting button at the same time
- Available in different sizes: from 0.20ul to 5000ul

DIFFERENT  
PIPETTES FOR  
ALL RESEARCH  
TYPES!

### CAPP BRAVO AUTOMATIC PIPETTE

- Single-channel pipette with lightweight, ergonomic design for comfortable tip ejection and handling
- Manufactured from highest-quality autoclavable materials
- Volume lock feature achieves more reliable pipetting experience
- Metal cones with double O-rings avoid risk of breakage
- Smooth tip mounting
- Compatible with wide range of tip brands
- Available as a fixed or variable volume pipette with 9 volume ranges from 0.10ul to 10.00ml



PIPETTES

### CAPP TRONIC ELECTRONIC PIPETTE

- Electronic 8-channel pipette that offers standard pipetting, multi-dispensing, mixing, sequential aspiration (for dilution) and sequential dispensing
- Can store up to 9 individual protocols
- Includes long-lasting lithium battery
- Lightweight design with a stepper-motor
- Designed to optimize workflows without compromising accuracy or precision
- Compatible with most brands of pipette tips on the market
- Available in different sizes: from 2.00ul to 1200ul



### ECOPIPETTE

- Single-channel micropipette that can be used as both a fixed and variable volume pipette
- Supplied in biodegradable or recyclable packaging
- Large pad for easy tip ejection
- Display fully visible during hand-held operation
- Double O-rings ensure optimal seal and low force tip mounting
- Anodised aluminum tip cones prevent breakage
- Reduced force requirement for aspiration and blow-out
- Fully-autoclavable
- Compatible with major pipette tip brands
- Available in different sizes ranging from 0.20ul to 5.00ml



### CAPP AERO MULTI-CHANNEL PIPETTE

- 96-channel and 384-channel options available
- Reduces thumb workload, eliminating strain injuries & user discomfort
- Double silicon O-rings on nose cones eliminate the need to 'hammer' pipette into tip rack to mount tips
- One of the lightest pipettes on the market; easily maintainable and fully autoclavable
- Has anodised aluminum and metal nose cones to prevent breakage

### RIPETTE PRO

- Single-channel pipette designed for mechanical dispensing of highly precise dosage volumes systematically
- Optimized for dispensing contaminated fluids and volatile liquids
- When used with Ritips Evolution and other compatible tips, Ripette Pro is reliably protected against contamination from aerosols ascending from the tip
- Offers wide range of dosing volumes, and allows for quick tip changes between 12 tip sizes
- Can dispense volumes from 1.00ul to 5.00ul
- By using 10-stage adjustment ring, up to 120 different program steps can be chosen



PIPETTE TIPS

STANDARD AND ROBOTIC PIPETTE TIPS

For a variety of manual and automated liquid applications

CAPP EXPELL TIPS

- Manufactured from virgin polypropylene
- Compatible with majority of pipette brands on the market
- Different lengths available for different applications within the same volume range
- Crystal clear, incremental marks for ease of use
- ExpellPlus Low Retention and Expell Standard tips available
- Manufactured in clean-room facility eliminates risk of contamination
- Certified RNase, DNase, DNA and Pyrogen-free
- Available ordering options: tips in bulk, tips in racks, sterile tips in racks, tips in rack reload system, filtered tips in bulk



SEROLOGICAL PIPETTES

- Made from transparent medical-grade polystyrene sterilised by gamma irradiation
- Designed for accurate and rapid fluid dispensing
- Sterile, pyrogen-free and cotton-plugged for a variety of liquid handling applications
- Highly legible permanent graduation markings prevent ambiguity; guarantee precise reading and accurate dispensing
- Ideal for use with tissue culture applications
- Each pipette comes with filter barrier to prevent overflow
- Uniform mouth piece fits all major pipettes and is colour-coded for easy identification
- Available ordering options: in bulk (25 pipettes per bag) or individually wrapped

RITIPS STANDARD

- Available in 8 classic sizes: 0.05ml, 0.50ml, 1.25ml, 2.50ml, 5.00ml, 12.50ml, 25.00ml, 50.00ml
- Ideal for working with infectious and volatile liquids; fluid will never touch the pipette which avoids contamination
- For sensitive applications or analysis of body fluids, Ritips are available as a bioclean® grade (individually sealed and sterilized)
- Each tip tested to guarantee non-leakage, which is documented in lot-specific records



PIPETTE TIPS

RITIPS EVOLUTION

- Compatible with Ripette Pro® and other pipettes
- Compatible with multiple steppers for different applications
- Available in 9 tip sizes: 0.10ml, 0.20ml, 0.50ml, 1.00ml, 2.50ml, 5.00ml, 10.00ml, 25.00ml, 50.00ml
- Each tip tested individually to ensure 100% reliable & repeatable results
- Ordering options: packs of 25 or 100 tips, bioclean® quality (individually sealed and sterilized)

TIPS FOR  
MANUAL AND  
AUTOMATED  
PROCESSES!



ROBOTIC TIPS BLACKKNIGHTS

- Produced in cleanroom conditions
- DNase, RNase, ATP and pyrogen free
- Conductive robotic tips, can be used to dose small volumes with high precision
- Conductivity helps liquid handlers recognize filling height & guarantees minimal immersion of tip into liquid
- Compatible with Hamilton, Qiagen, Olympus and other liquid handlers

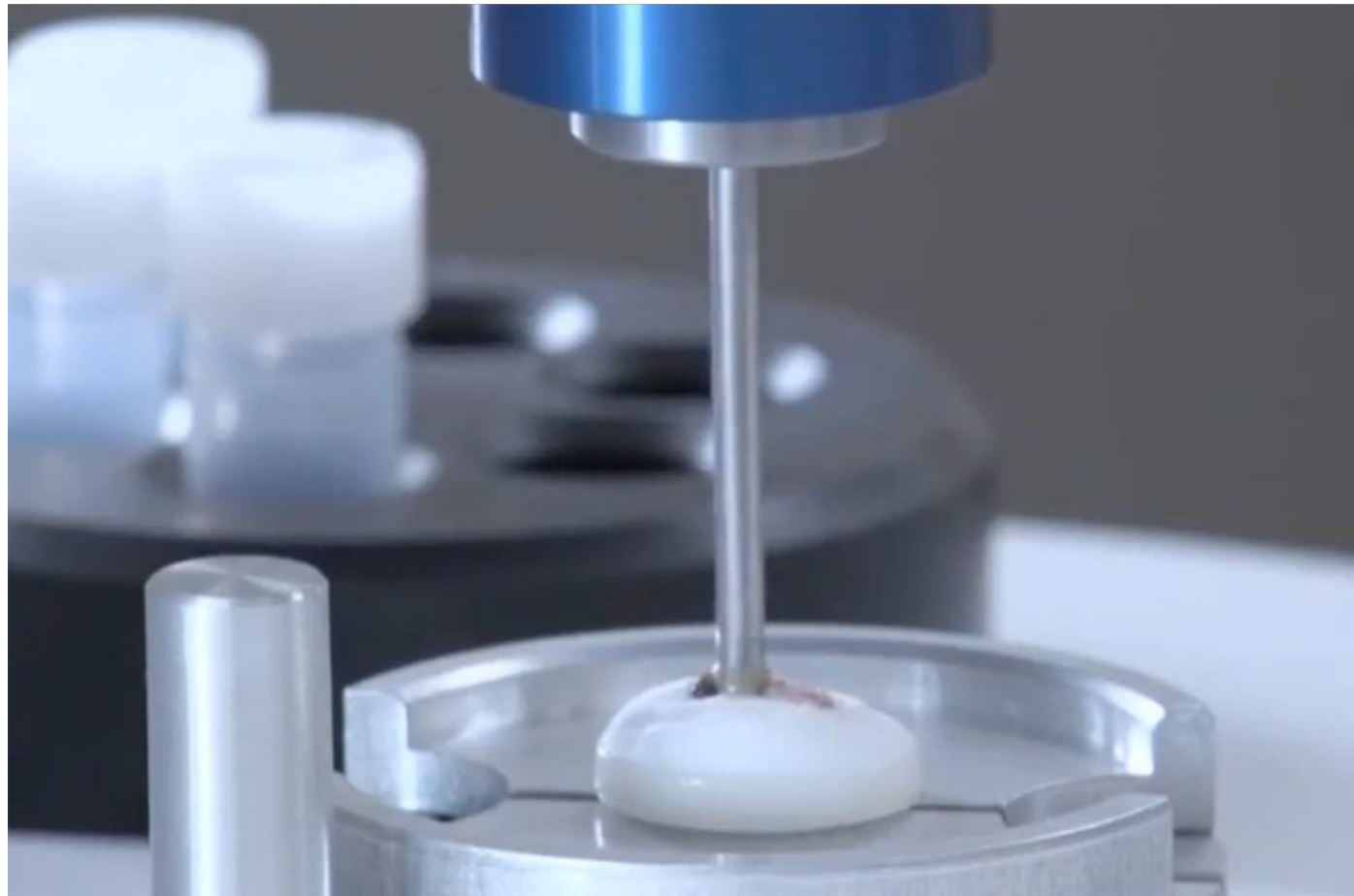


ROBOTIC TIPS CLEARKNIGHTS

- Produced in cleanroom conditions
- Tested by independent laboratories to be DNase, RNase, ATP and pyrogen free
- Tips compatible with a variety of Tecan, Qiagen, Perkin Elmer and Dynex liquid handlers



# sample preparation



## THE CXT 353

A benchtop frozen sample aliquotter that maximizes the quality of samples

- Semi-automated benchtop instrument that can extract multiple aliquots from a range of frozen samples: tissue, feces, serum, plasma, whole blood, and urine
- Parent sample and frozen aliquots maintained from -80°C to -150°C via LN2 chilling
- Single-use, nuclease-free probes prevent sample-to-sample carryover and contamination
- Includes laser-targeting feature to core specific tissue sections (note: laser does not generate heat)
- Eliminates damaging freeze-thaw cycling
- Compatible with wide range of vial types
- Frozen sample aliquotting allows for the distribution of smaller sample volumes, extending the use of critical samples like rare disease, late-stage disease, and pediatric samples

FROZEN ALIQUOTTERS



brands



## FROZEN ALIQUOTTERS, RACK THAWING STATIONS AND MORE

Last year we launched the CXT 353 from Basque Engineering + Science, a frozen sample aliquotter that can be used to generate multiple frozen aliquots from the same parent sample. It eliminates the freeze-thaw cycle and effectively maximizes sample utility.

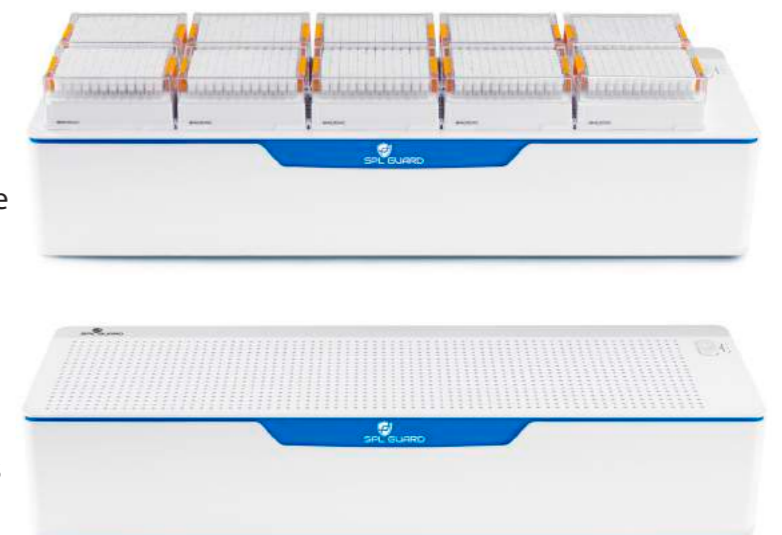
If samples must be thawed, we also offer the SPL Guard Florida, a rack thawing station that can thaw up to 10 racks of tubes in 9 minutes—60% faster than any other instrument on the market.

For routine sample preparation tasks, we also offer the full line of bench-top equipment from Crystal Technology & Industries. Their portfolio includes mini centrifuges, mixers, shakers, stirrers, FreezeCell™ cryopreservation boxes and FreezeBox™ cooling devices.

## SPL GUARD FLORIDA

A rack thawing station for controlled sample thawing

- Thaws up to 10 ANSI/SLAS format racks or microplates in 9 minutes
- 60% faster than other rack thawing stations
- Uneven thawing = less than 20% per rack
- Large, custom-configurable thawing surface
- Can position racks in portrait or landscape orientation, or a combination of both
- 7 fans used to thaw heavily frozen racks quickly and reproducibly
- Remote I/O port included for integrating liquid handlers or other automated systems
- No extra input of heat, calibration, or maintenance required for operation



SHAKERS & MIXERS

BENCH-TOP EQUIPMENT

Shakers, mixers, centrifuges and more for routine laboratory procedures



MICROPLATE SHAKER

The CappRondo shaker can be used with most types of microtiter plates. It has orbital motion and adjustable speed settings for 300-1800 rpm.



3D SHAKER

The CappRondo 3D shaker operates at a variable speed of 10-120 rpm. Its 3D rocking and tumbling motion provides thorough homogenous mixing.



PLATFORM SHAKER

The CappRondo platform shaker can hold up to 7.5kg and is compatible with almost all commonly used vessels thanks to multiple attachment platforms.



HOTPLATE STIRRER

The CappRondo hot plate stirrer has a load capacity of 20 liters and can process samples in a temperature range from ambient to 550°C.



MINI INCUBATOR

The mini incubator is designed with a microprocessor-controlled thermal system and ample internal space to hold various sample vials and bottles.



STIRRERS & MORE

PLATE WASHERS

The CappWash plate washer is an ideal ELISA plate washer for small scale work. It's available in three models: 8-channel, 12-channel, or 16-channel format.



THER-MIX

The Ther-Mix is a compact thermal mixer that can mix various tubes and vessels at 200-3,000 rpm with interchangeable heated modules.



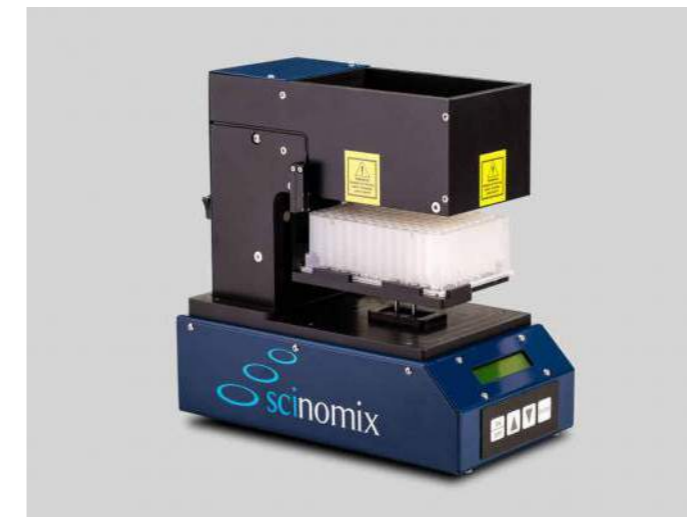
BLOOD MIXER ROLLER

The CappRondo Blood Mixer Roller is a digital mixer that can process blood and other viscous samples. This mixer can hold up to fifteen 7.00ml blood tubes.



MINI VORTEX MIXER

The CappRondo vortexer is ideal for thorough mixing and quick vortexing up to 4,500rpm. It is compatible with tubes up to 30mm in diameter.



SCINOMIX BB DROPPER

- Bench-top device that can automatically dispense up to 10 metallic BBs into ANSI/SLAS microplates, deep well blocks, or tube blocks
- Can hold up to 20,000 BBs at once, with optional extension hopper to double capacity
- Operating height of the dispensary mechanism adjustable to accommodate various plate/block heights (up to 80mm)
- Interchangeable cartridges can be used to allow for various BB sizes
- Average cycle time: 4.193 seconds per BB
- Number of BBs per well: 1-10 depending on size
- Easy-to-use plug-and-play device



UPHO BEAD BEATER

- Versatile bead beater that can quickly and efficiently grind and homogenize up to 64 samples simultaneously in 1 minute
- Can be used to lyse a wide range of samples, like: plant and animal tissues, cells, bacteria, and yeast
- Samples homogenized by high-speed shaking with glass, ceramic, or metal beads depending on sample type and research application
- User-friendly interface that can operate samples at cryogenic and room temperatures
- Applications include: DNA, RNA and protein extraction, cell disruption, material dispersion, and more

CAN BE USED TO LYSE A WIDE RANGE OF SAMPLES!



CLINICAL CENTRIFUGE

The clinical centrifuge is a blood separation device that works with 1.50ml to 10.00ml tubes.



MICROCENTRIFUGE

The CappRondo microcentrifuge runs at 6,000rpm and works with 1.50ml and 2.00ml tubes.



MINI CENTRIFUGE

The CappRondo mini centrifuge runs at 15,000rpm and can hold twelve 1.50ml or 2.00ml tubes.



# sample measurement



## PCR PLATES, DEEPWELL PLATES AND CENTRIFUGE TUBES

For researchers working on PCR and qPCR applications, we offer the full range of non-skirted, semi-skirted and fully-skirted PCR plates and microcentrifuge tubes from CAPP. We also offer a variety of deep well plates from Ritter Medical to help researchers handle microscopic samples in the quickest and most efficient way possible. With Ritter's wide range of consumables, even the most customized automated workflows can be accommodated.

## EXPELL PCR 96-WELL PLATES

Compatible with the most common thermocyclers on the market

PCR PLATES



- Manufactured from medical grade polypropylene
- Produced in a clean room environment to prevent contamination; DNase, RNase, pyrogen free
- Available in skirted, non-skirted, and semi-skirted formats
- Non-skirted PCR plates can be cut into smaller customized PCR plates, extending their utility
- Volume capacities range from 0.10ml-0.20ml
- Available in frosted and clear options
- Non-skirted and semi-skirted plates are heat stable; won't melt or warp on thermocycler blocks
- All PCR plates can be autoclaved safely
- Semi-skirted plates automation ready; can be used in protocols that use robots

COMPATIBLE WITH MOST THERMAL CYCLERS!

## EXPELL PCR 384-WELL PLATES

A rack thawing station for controlled sample thawing

- Manufactured from special blend of polypropylene designed specifically for PCR and qPCR applications
- Fully-skirted, rigid, flat, and stackable plates
- Highly transparent material, ideal for applications where optical qPCR signal obtained through plate bottom
- Fit standard 384-well cyclers and can be used in many 384-well block qPCR cycler models
- Ideal for robotic applications, enabling high-throughput and low-volume processing
- Have specially treated ultra-thin walls to minimize binding of proteins
- DNase, RNase, and pyrogen free
- Can be autoclaved safely
- Evaporation grade less than 3%, enabling processing PCR volumes as small as 5.00ul



DEEP WELL PLATES

## RITTER DEEP WELL PLATES

For storage and preparation of different sample types

### RIPLATE® MAGNETIC

- Developed specifically for magnetic separation technology: for the filtration of proteins as well as the extraction of DNA
- Highly resistant toward commonly used chemicals, solvents, and alcohols
- High stability during centrifugation
- Working volume of 20µl-1000µl & total volume of 0.20ml-2.00ml per well
- Alphanumeric-coded
- Raised rims reduce risk of cross-contamination
- Newly developed cylindrical wells enable good bioturbation of samples



PREPARE  
SAMPLES FOR  
DOWNSTREAM  
RESEARCH!

### RIPLATE® 96

- Manufactured out of polystyrene to achieve optimal surface for microscopic analysis
- Standardized dimensions of plate (128 x 85mm) ensure compatibility with common laboratory instruments
- Ideal for ELISA applications
- Available in different shapes (U-, V-, and F-shape) and can be sterilized upon request
- Alphanumeric-coded



### RIPLATE® 384

- Optimal for smaller volumes
- Available in polypropylene and polystyrene for automated screening and storage systems
- Available in different colors: clear (PS), transparent (PP), white (PS), black (PS)
- Alphanumeric-coded
- Round cavities for reduced capillary forces
- Flat-bottom and V-bottom versions available
- 3mm high frame for stable & slip-free stacking



### RIPLATE® ROUND WELLS

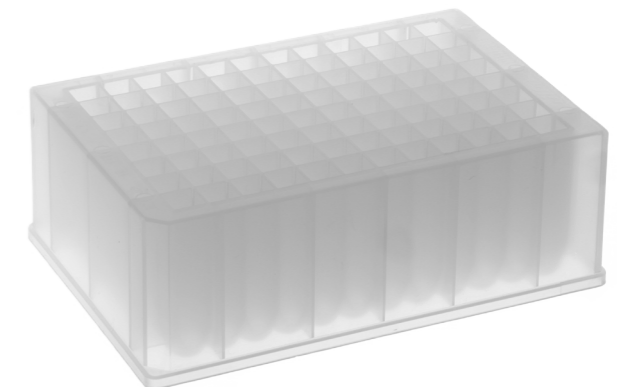
- Versions available in polypropylene and polystyrene
- Versions available for use in thermocyclers or for defrosting of samples in hot water bath
- Available in 1.00ml and 2.00ml well volumes
- Raised wells reduce risk of cross-contamination
- Optimized footprint according to SBS standard
- For applications with extreme temperature circumstances like freezing or defrosting
- Highly resistant to chemicals; ideal for sensitive diagnostic applications



DEEP WELL PLATES

### RIPLATE® SQUARE WELLS

- Made from high-quality polypropylene
- Plate wells designed to ensure the maximum amount of liquid is absorbed during sample storage process
- Manufactured according to SBS standards; designed to maximize sample storage capacity
- Available with U- or V-bottom wells
- Available in 96, 48, or 24-well formats



### RIPLATE® MEDIO

- Made from high-quality polypropylene
- Lower plate height & wider wells mean you can store similar volumes as other Riplates®, yet stack more plates for optimal storage
- Higher well rims allows for airtight closure or sealing of plate
- Newly developed conical wells provide good bioturbation
- Riplate medio 0.50ml: height of 20.5mm; total volume of 0.65ml per well; working volume of 20ul-500ul per well
- Riplate medio 1.00ml: height of 27.0mm; total volume of 1.20ml per well; working volume of 50ul-1000ul per well



PCR TUBES & LU-MINI

## PCR AND CENTRIFUGE TUBES

For storage and preparation of different sample types



DIFFERENT TUBES FOR DIFFERENT NEEDS!



### BLUCAPP CENTRIFUGE TUBES

- Manufactured from polypropylene
- Easy-to-read graduations
- Large writing area (20x50mm)
- Leak-proof cap with ridges for optimal grip when wearing gloves
- 3/4 turn closure allows for single-handed operation when opening and tightening
- Autoclavable at +121°C for 20 minutes
- Tested to endure 17,000 RCF
- Working temperature: -80°C to +121°C
- Available in 15ml and 50ml conical tubes

### CAPP EXPELL PCR TUBES

- DNase, RNase, pyrogen free
- Polished interior prevents protein adhesion
- Can be safely autoclaved without melting
- Thin-walled PCR tubes optimized for performance in wide range of thermocyclers
- Thin walls transfer heat efficiently into reaction mix; low condensation rates
- Applicable to broad range of PCR protocols
- V-bottom minimizes sample loss
- Available in 0.10ml and 0.20ml tubes
- PCR tubestrips and 96-well plates available

## THE LU-MINI

A compact, lightweight, and versatile luminometer

### FEATURES

- Compatible with 10-15mm round tubes and 10mm square cuvettes
- Stores up to 1000 test results
- USB connectivity for data transfer via PC app
- Solid-state detector
- Plug-and-play usability and intuitive LCD touch screen interface
- For water testing, DNA probe assays, drug discovery, and more



# sample management



## TUBE HANDLERS, LASER MARKERS, AND MORE

To optimize the sample management process in your lab, we offer a range of lab automation equipment from brands like Micronic, AFYS3G, HTI bio-X and Scinomix.

With the automated HT700 Tube Handler from Micronic, researchers can sort up to 550 sample tubes per hour. Its semi-automated counterpart, the HT500, can be used to sort and read up to 250 samples tubes per hour.

With the Lambda576 Automated Laser Marker from AFYS3G, researchers can laser-etch up to 6 ANSI/SLAS format racks of tubes with any kind of text, marking or sample ID in less than 2 hours.

To eliminate hand labeling tubes in the lab, we offer the fully-automated tube labeling systems from Scinomix. When paired with a bulk tube feeder (like the VXQ or VXi), these systems can label up to 300 tubes per hour. Additional modules can be added to dispense aqueous solutions and scan 2D barcodes.



TUBE HANDLERS

## THE H500 TUBE HANDLER

An automated system that can sort and read up to 250 tubes per hour

- Max rack capacity: 20 racks
- Rack ID and rack position linked by using included handheld barcode reader for scanning
- Compatible with 96-well tubes: 0.30, 0.40ml, 0.50ml, 0.75ml, 0.80ml, 1.10ml, and 1.40ml i
- Includes 1D handheld barcode reader and integrated 2D tube code scanner
- User-friendly, intuitive interface included
- Can be used as stand-alone device or be integrated with LIMS systems
- Load CSV file pick list from USB stick
- Output CSV file of rack content

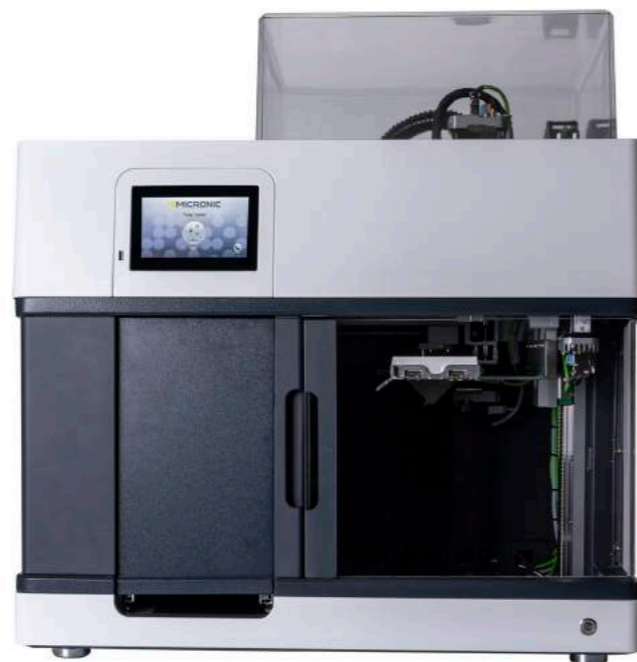


AUTOMATE  
THE SAMPLE  
SORTING  
PROCESS IN  
YOUR LAB!

## THE HT700 TUBE HANDLER

An automated system that can sort and read up to 550 tubes per hour

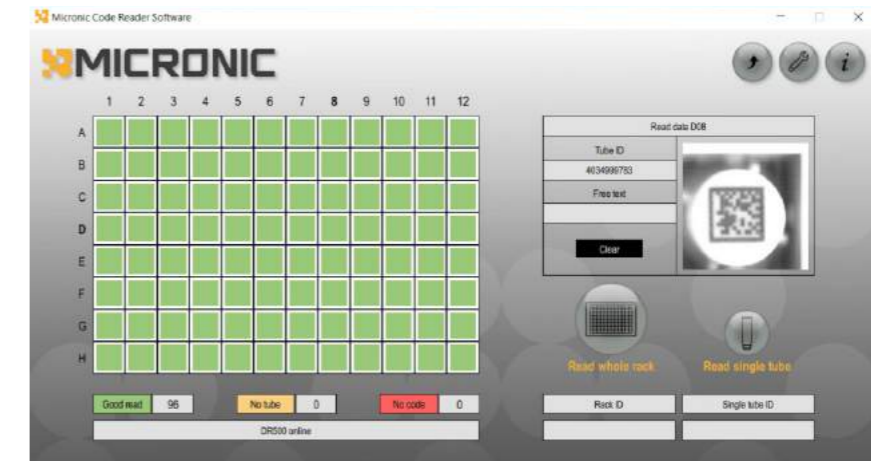
- Max source rack capacity: 24 racks
- Max target rack capacity: 3 racks
- Designed with small footprint but large capacity
- Short distance between samples and target racks make for quick and easy sorting
- Automatic linking between rack ID and rack position; no need to use separate 1D code reader
- Closed system guarantees user safety; separate safety stop included for sample and product protection
- Compatible with 96-well format tubes: 0.30, 0.40ml, 0.50ml, 0.75ml, 0.80ml, 1.10ml, 1.40ml
- Includes 1D and 2D barcode reader
- User-friendly, intuitive interface included; no extra PC required
- Can generate "pick" list from LIMS system to load into unit via USB stick



## 1D & 2D BARCODE READERS

For fast, accurate, and efficient sample identification

CODE READERS



### MICRONIC CODE READER SOFTWARE

- All features in Micronic software included at no extra cost, along with free upgrades and tech support
- Optimizes compatibility of 2D tubes with Micronic rack readers, automated workflows and LIMS
- Includes automatic re-read function to ensure all codes in rack are deciphered quickly
- When rack is scanned, each cell contains high-quality image of the code and tube ID
- Includes "no tube, no code" function if tube cannot be found
- Adjustment controls included for brightness, contrast, and threshold to optimize tube code display
- Includes automatic code polarity recognition which allows users to scan white on black code surfaces and black on white code surfaces without changing settings

### MICRONIC TUBE READER DT300

- Handheld wireless tube reader that can instantly read 1D barcodes and 2D Data-Matrix codes on 24-, 48-, and 96-well format tubes and racks
- Includes high-capacity lithium polymer battery for 10-12 hours of continuous use or 15,000 2D scans
- Easily recharges through USB connection
- Compatible with iOS, Android, and Windows (mobile devices with built-in Bluetooth)
- Keyboard wedge functionality for direct data entry into LIMS system
- Personalized configuration with time, date, user, etc.



CODE READERS



MICRONIC TUBE READER DT500

- Most versatile single-tube reader on the market
- Reads 1D rack barcodes and 1D barcoded/2D Data-Matrix coded tubes in less than 1 second
- Has keyboard wedge functionality so scanned data can be sent to many applications
- Compatible with 96-, 48-, and 24-well format racks and tubes
- Includes unique condensation-free scanner plate
- Easy to use; no software installation required
- 5-year warranty

READ AND VALIDATE EVERY CODE, EVERY TIME!



MICRONIC RACK READER DR500

- Reads full racks of 96-, 48-, or 24-well format tubes in less than 5 seconds
- Includes single-tube code reading function
- Includes CIS imaging technology
- Compatible with many 2D coded tube brands
- Includes Micronic Code Reader software
- Also available: an attachable side barcode reader for scanning and decoding 1D barcodes
- DR505 version available with anti-frost system
- 5-year warranty

MICRONIC RACK READER DR700

- Reads a full racks of 96-, 48-, or 24-well format tubes in less than 7 seconds
- Includes anti-frost system and single-tube code reading function
- Includes CCD imaging technology and Micronic Code Reader software
- Also available: an attachable side barcode reader for scanning and decoding 1D barcodes
- 5-year warranty



INFORMATION MARKING SYSTEMS

For laser-etching tubes with permanent markings

THE LAMBDA8 MANUAL LASER MARKER

- Compatible with 0.30ml-15.00ml tube sizes
- Compatible with 96-, 48-, 24-well format tubes
- Markings are laser-etched onto tube surface
- Can laser-etch racks, rack covers, sample storage caps, and other labware
- Can laser-etch any shape, logo, text, or sample ID onto tube surface
- Laser engraved markings can't be separated from plastic surface of tube
- Includes user-friendly software that can be used to create and select custom labware markings



LASER MARKERS

THE LAMBDA576 AUTOMATED LASER MARKER

- Compatible with ANSI/SLAS format racks
- Max capacity: 6 ANSI/SLAS format racks
- No labels, stickers, or ink used to mark tubes
- User-friendly software can be used to select and laser a variety of markings: 2D codes, 1D barcodes, logos, text, or sample IDs directly onto tube surface
- Markings can't be separated from tube, ensuring absolute sample traceability
- Markings are resistant against chemicals, mechanical abrasion, and temperatures between -196°C and +100°C
- Settings can be changed to accommodate tubes from different brands



DID YOU KNOW...

Tubes with white side walls, such as our hybrid tubes from Micronic, work best with the laser markers because of the stark contrast in color between the laser-etched markings and the white tube walls (as opposed to laser-etched markings on transparent tube walls). Overall, the markings laser-etched onto hybrid tubes give researchers the best opportunity to trace samples both visually and automatically, ensuring maximum sample traceability.



TUBE PROCESSORS

## THE X-TUBEPROCESSOR SERIES

For automated tube and liquid handling

### X-TUBEPROCESSOR BASIC

- Throughput: up to 550 tubes per hour
- Rack capacity: one 96-well rack or 2 SBS 48-well format racks
- Base model can be extended with rack feeder to hold up to 7 racks total
- Uncaps and caps a variety of screw cap tubes
- Features torque control, blank detection, and tube and cap presence control
- Eliminates monotonous manual work
- Reduces potential repetitive motion disorders
- Reads barcodes on tubes & racks
- Labeling module can be added to base unit



### X-TUBEPROCESSOR SMART

- Throughput (for capping): 300 tubes/hour
- Combines multiple automated processes: liquid handling, capping, and labeling
- Rack capacity: 6 SBS format 48-well racks
- Optional dispenser module available with peristaltic pump to enable precise, sequential filling of tubes with desired reagents
- Replaces ergonomically tiring and monotonous work with automated system
- Can read and identify tube and rack barcodes
- Labeling module available



## SEMI-AUTOMATED TUBE LABELERS

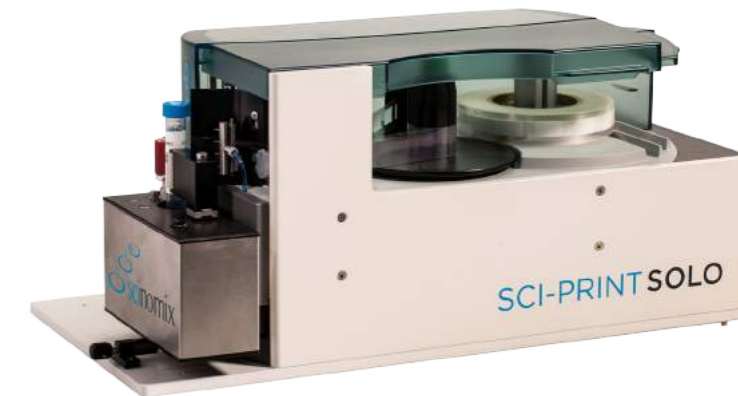
For manually labeling smaller quantities of tubes

### SCI-PRINT SOLO TUBE LABELER

- Compatible with vials ranging in size from 0.50ml to 50ml (8mm to 29mm in diameter)
- Thermal transfer printer (300 or 600 dpi)
- Windows based software
- CE certified
- Consistently places labels on tubes
- Increases productivity in lab
- Eliminates human error that can occur from hand labeling tubes
- Commonly integrated into liquid handlers
- User-friendly software



**Note:** the Sci-Print SOLO can be integrated into liquid handlers like the Tecan EVO.



CAN BE INTEGRATED INTO LARGER AUTOMATED SYSTEMS!

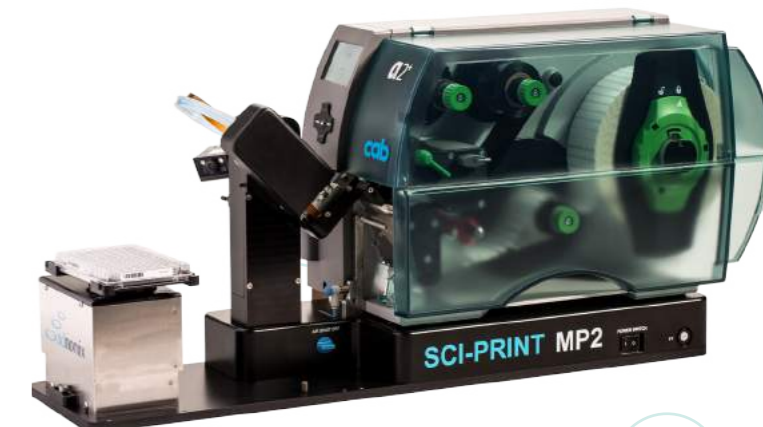
## SEMI-AUTOMATED PLATE LABELERS

For printing and applying labels to a variety of ANSI/SLAS microplates

### SCI-PRINT MP2 PLATE LABELER

- Rotating, height-adjusting platform provides flexibility to print on all sides and two vertical levels of plates
- Versatile software allows system to be used as stand-alone device or integrated into automated plate handling systems
- Optional barcode scanner available
- Includes thermal transfer printer (600 dpi)
- Labels up to 4 sides of a plate
- Standard label size: 0.25 (H) x 2.00 (W) in
- Windows based software driver
- Consistently labels plates
- Prints range of standard barcodes including 1D and 2D

**Also Available:** The Sci-Print MP2+ Fully-Automated Plate Labeler with vertical stackers for loading and unloading microplates.



TUBE LABELERS

## FULLY-AUTOMATED TUBE LABELERS

For printing and applying labels to tubes ranging from 0.50ml to 50.0ml in size

### SCI-PRINT VX2

- Throughput of 425 tubes per hour
- 6-position work deck that can accommodate up to 600 tubes
- Thermal transfer printer
- Ability to handle honeycomb plates
- Compatible with Micronic 2D vials and vials from other brands ranging from 0.50ml to 50ml in size
- Modules can be added to fill aqueous solutions, (de)cap screw cap tubes, read or validate 2D barcodes
- Increases productivity & efficiency in lab
- Consistently places labels on tubes
- Same system can handle multiple tube types
- Eliminates human error that occurs from hand labeling tubes
- Reduces ergonomic injuries from manually labeling tubes



**Also Available:** the Sci-Print VXL Automated Tube Labeler with a 12-position work deck.



**Also Available:** the Universal Gripper, allowing users to easily change between tube types without changing hardware.

## sample storage

SAFELY  
STORE AND  
PROCESS  
SAMPLES IN  
THE LAB!



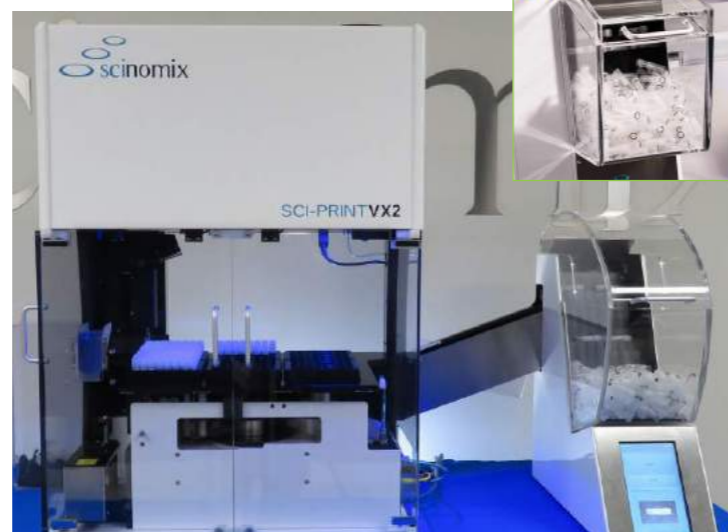
## BULK TUBE FEEDERS

For pre-racking tubes in the Sci-Print VX2 or Sci-Print VXL

### SCINOMIX VXi

- Adapts to wide range of tube types & sizes
- Handles tube diameters from 8mm to 28mm
- Handles internal & external threaded tubes as well as capped & uncapped tubes
- Optional hopper extension available
- With a camera, optical technology used to detect tube orientation to aid in the delivery for labeling and racking tubes
- User-friendly software accessibility via LCD screen allows for quick & easy access to settings

**Also Available:** the Scinomix VXQ Bulk Tube Feeder.



## LABWARE, FREEZER RACKS, CAPPERS AND DECAPPERS

At NBS Scientific, we offer the full range of 96-well, 48-well, and 24-well format sample storage tubes, caps, and racks from Micronic. Tube volumes range from 0.30ml to 6.00ml and are available non-coded, alphanumeric-coded, or with a unique 2D Data-Matrix code on the tube bottom. TPE push caps are available for internal and external thread tubes in 96-well format. Additionally, screw caps are available for internal and external thread tubes in 96-well, 48-well, and 24-well format. The Micronic range of ultra-low temperature (ULT) racks have an extremely strong design for cryogenic storage.

To process samples in the lab, we also offer cappers and decappers for both push cap and screw cap tubes from brands like AFYS3G, Scinomix, XQ Technologies, and Micronic. For lower throughputs, we offer manual or semi-automated cappers like the CS500, CapMate Plus, and CP400. For higher throughputs, we offer fully-automated cappers like the CS700, Sigma96, and Scinomix RapidCap2.



STORAGE TUBES

SUPERIOR TUBE FEATURES

For optimal storage in ultra-low temperatures

Medical approved virgin Polypropylene according to the highest standards

High fill rate

Low protein binding surface, non hygroscopic material

Mechanical strength

RNase/DNase and Endotoxin (pyrogen) free

Inner V-bottom for maximum sample recovery and the lowest dead volume

Inner U-bottom for maximizing the working volume of tubes

The Screw Cap tube (internal thread) features a single turn thread for easy opening and closing of the tube.

The Push Cap tube (internal thread) has a special design that doesn't allow caps to pop off during thawing (-80°C) or pushed in during piercing.

The Screw Cap tube (external thread) has a triple start thread for optimal sealing quality.

Black or white code surface (bottom and/or side) can't be separated from transparent tube due to patented 2K injection molding technique

Permanent laser-etched code on the tube bottom is chemically, scratch and mechanically resistant

INTERNAL THREAD TUBES

Overview and specifications

STORAGE TUBES



	0.50 ml	0.75 ml	1.10 ml	1.40 ml	2.00 ml	4.00 ml	6.00 ml
<b>Storage Rack</b>	Loborack-96	Loborack-96	Roborack-96	Roborack-96	Roborack-96	Micronic 48-4	Micronic 24-4
<b>Ultra Low Temperature Rack</b>	Micronic 96-1/Q1	Micronic 96-2	Micronic 96-3	Micronic 96-4	Micronic 96-5		
<b>Thread Type</b>	<b>Internal</b>	<b>Internal</b>	<b>Internal</b>	<b>Internal</b>	<b>Internal</b>	<b>Internal</b>	<b>Internal</b>
<b>Tube Type</b>	Screw Cap tube	Screw Cap tube	Screw Cap tube	Screw Cap tube	Screw Cap tube	Screw Cap tube	Screw Cap tube
<b>Inner Tube Shape</b>	V-bottom	V-bottom	V-bottom	V- or U-bottom	U-bottom	Flat-bottom	Flat-bottom
<b>Working volume PC (+21°C)*</b>	0.30ml	0.58ml	0.90ml	1.15 or 1.20ml	1.58ml	N/A	N/A
<b>Working volume PC (-21°C)*</b>	0.30ml	0.53ml	0.79ml	1.01 or 1.05ml	1.39ml	N/A	N/A
<b>Working volume SC (+21°C)*</b>	0.21ml	0.48ml	0.80ml	1.04 or 1.10ml	1.49ml	2.70ml	4.80ml
<b>Working volume SC (-21°C)*</b>	0.21ml	0.48ml	0.78ml	1.00 or 1.06ml	1.38ml	2.65ml	4.10ml
<b>2D Data-Matrix coded</b>	Yes	Yes	Yes	Yes	Yes	Yes	Yes
<b>Alphanumeric Coded</b>	Yes	Yes	No	Yes	Yes	Yes	No
<b>Non-Coded</b>	Yes	Yes	Yes	Yes	No	Yes	Yes
<b>Capping Options (SC = Screw Cap)</b>	Low Profile SC Screw Cap Push Cap	Low Profile SC Screw Cap Push Cap	Low Profile SC Screw Cap Push Cap	Low Profile SC Screw Cap Push Cap	Low Profile SC Screw Cap Push Cap	Screw Cap	Screw Cap
<b>Outer Diameter</b>	9.0mm	9.0mm	9.0mm	9.0mm	9.0mm	13.0mm	16.3mm
<b>Tube Height</b>	18.5mm	26.0mm	36.5mm	44.0mm	59.0mm	44.0mm	43.4mm
<b>Tube Height w/ PC**</b>	19.5mm	27.0mm	37.5mm	45.0mm	60.0mm	N/A	N/A
<b>Tube Height with SC</b>	26.0mm	33.5mm	44.0mm	51.5mm	66.5mm	51.0mm	51.4mm
<b>Available Precapped</b>	Yes	Yes	Yes	Yes	Yes	Yes	Yes
<b>Twist-lock</b>	Yes	Yes	Yes	Yes	Yes	Yes	Yes
<b>Snap Tube Option</b>	Yes	Yes	Yes	Yes	Yes	No	No
<b>Sterilization Option</b>	Yes	Yes	Yes	Yes	Yes	Yes	Yes
<b>DNase/RNase free</b>	Yes	Yes	Yes	Yes	Yes	Yes	Yes
<b>Made in class 7 clean room</b>	Yes	Yes	Yes	Yes	Yes	Yes	Yes
<b>Min. Storage Temp***</b>	VP LN2	VP LN2	VP LN2	VP LN2	-80°C***	VP LN2	VP LN2
<b>Availability</b>	Bulk, Rack	Bulk, Refill, Rack	Bulk, Rack	Bulk, Refill, Rack	Bulk, Rack	Bulk, Rack	Bulk, Rack

MICRONIC'S UNIQUE MANUFACTURING PROCESS

All Micronic sample storage tubes are manufactured to industry leading strict tolerances. Due to the unique 2K injection molding technique, the highly transparent tube and the code surface are molded to one component leading to the following advantages:

- Code surface cannot be separated from the transparent tube ensuring absolute traceability
- Solid and uniform walls allow maximum working volume
- No contamination during the production process
- Can withstand multiple freeze-thaw cycles with no leakages or caps popping off during freeze-thaw
- Can withstand grinding of samples by high speed bead beating for DNA/RNA extraction

\* If more sample volume is used in a tube than the specified working volume, possible deformation of the tube may occur.

\*\* Also applicable for the Low Profile Screw Cap.

\*\*\* Temperature range of the material of tubes, caps and racks is approved from -80°C to +100°C. In practice tubes are used in lower temperature until vapor phase LN2 (-150°C to -196°C). Micronic does not recommend storing tubes in liquid phase nitrogen (LN2). In practice tubes are only snap frozen in LN2 (without submerging the cap).



TUBE STRIPS AND AMBER TUBE OPTIONS!



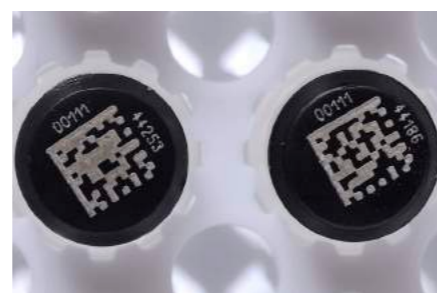
STORAGE TUBES

## EXTERNAL THREAD TUBES

Overview and specifications



	0.30 ml	0.40 ml	0.75 ml	0.80 ml	1.00 ml	1.10 ml	1.40 ml	2.00 ml	3.50 ml	4.00 ml
<b>Micronic ULT Rack</b>	Micronic 96-1	Micronic 96-1	Micronic 96-2	Micronic 96-3	Micronic 48-1	Micronic 96-3	Micronic 96-4	Micronic 96-5	Micronic 24-2	Micronic 48-4
<b>Thread Type</b>	External	External	External	External	External	External	External	External	External	External
<b>Tube Type</b>	Screw Cap	Screw Cap	Screw Cap	Screw Cap	Screw Cap	Screw Cap	Screw Cap	Screw Cap	Screw Cap	Screw Cap
<b>Inner Tube Shape</b>	V-bottom	V-bottom	V-bottom	V-bottom	Flat Bottom	V-bottom	V-bottom	V-bottom	Flat Bottom	Flat Bottom
<b>Working volume PC (+21°C)</b>	0.25ml	0.38ml	0.57ml	0.68ml	N/A	0.85ml	1.03ml	1.48ml	N/A	N/A
<b>Working volume SC (+21°C)</b>	0.32ml	0.40ml	0.60ml	0.75ml	0.85ml	0.93ml	1.11ml	1.55ml	3.35ml	3.40ml
<b>Working volume SC (-21°C)</b>	0.25ml	0.38ml	0.55ml	0.65ml	0.85ml	N/A	1.05ml	1.25ml	3.05ml	3.00ml
<b>Working volume SC (-80°C)</b>	0.25ml	0.36ml	0.55ml	0.65ml	0.85ml	N/A	0.94ml	1.25ml	3.05ml	3.00ml
<b>2D Data-Matrix Coded</b>	Yes	Yes	Yes	Yes	Yes	Yes	Yes	Yes	Yes	Yes
<b>Alphanumeric-Coded</b>	No	No	No	No	No	No	No	No	No	No
<b>Non-Coded</b>	No	No	Yes	No	No	No	Yes	No	No	No
<b>Capping Options</b>	Screw Cap	Screw Cap	Screw Cap	Screw Cap	Screw Cap	Screw Cap	Screw Cap	Screw Cap	Screw Cap	Screw Cap
<b>Outer Diameter</b>	8.8mm	8.8mm	9.0mm	8.8mm	13.0mm	9.0mm	9.0mm	9.0mm	16.3mm	13.0mm
<b>Tube Height</b>	16.4mm	21.8mm	30.0mm	34.8mm	16.0mm	41.0mm	48.0mm	63.0mm	30.0mm	48.0mm
<b>Tube Height with PC</b>	17.8mm	23.2mm	31.4mm	36.2mm	N/A	42.7mm	49.4mm	64.4mm	N/A	N/A
<b>Tube Height with SC</b>	19.9mm	25.3mm	33.5mm	38.3mm	19.7mm	44.6mm	51.5mm	66.5mm	33.5mm	51.5mm
<b>Available Precapped</b>	Yes	Yes	Yes	Yes	Yes	Yes	Yes	Yes	Yes	Yes
<b>Twist-lock</b>	Yes	Yes	Yes	Yes	Yes	Yes	Yes	Yes	Yes	Yes
<b>Snap Tube Option</b>	No	No	No	No	No	No	No	No	No	No
<b>Sterilization Option</b>	Yes	Yes	Yes	Yes	Yes	Yes	Yes	Yes	Yes	Yes
<b>DNase/RNase free</b>	Yes	Yes	Yes	Yes	Yes	Yes	Yes	Yes	Yes	Yes
<b>Made in clean room</b>	Yes	Yes	Yes	Yes	Yes	Yes	Yes	Yes	Yes	Yes
<b>Min. Temperature**</b>	VP LN2	VP LN2	VP LN2	VP LN2	VP LN2	VP LN2	VP LN2	-80°C***	VP LN2	VP LN2
<b>Availability</b>	Bulk, Rack	Bulk, Rack	Bulk, Rack	Bulk, Rack	Bulk, Rack	Bulk, Rack	Bulk, Rack	Bulk, Rack	Bulk, Rack	Bulk, Rack



**Coding Options:** non-coded tubes, alphanumeric-coded tubes, 2D Data-Matrix coded tubes.

## HYBRID TUBES

Externally threaded tubes with 4 unique coding concepts

STORAGE TUBES

AVAILABLE  
IN SMALL  
PACKS!



	0.75 ml	1.40 ml	1.50 ml	2.00 ml	3.00 ml	3.00 ml	6.00 ml
<b>Micronic ULT Rack</b>	Micronic 96-2	Micronic 96-4	Micronic 24-1	Micronic 48-2	Micronic 48-3	Micronic 24-1	Micronic 24-4
<b>Thread Type</b>	External	External	External	External	External	External	External
<b>Tube Type</b>	Hybrid tube	Hybrid tube	Hybrid tube	Hybrid tube	Hybrid tube	Hybrid tube	Hybrid tube
<b>Inner Tube Shape</b>	U-bottom	U-bottom	Flat-bottom	Flat-bottom	Flat-bottom	Flat-bottom	Flat-bottom
<b>Working volume PC (+21°C)*</b>	0.57ml	1.03ml	N/A	N/A	N/A	N/A	N/A
<b>Working volume SC (+21°C)*</b>	0.62ml	1.20ml	1.45ml	1.95ml	2.90ml	2.45ml	6.00ml
<b>Working volume SC (-21°C)*</b>	0.62ml	1.06ml	1.40ml	1.80ml	2.60ml	2.25ml	5.55ml
<b>Working volume SC (-80°C)*</b>	0.60ml	1.00ml	1.30ml	1.65ml	2.60ml	2.25ml	5.30ml
<b>2D Data-Matrix Coded</b>	Yes	Yes	Yes	Yes	Yes	Yes	Yes
<b>Alphanumeric-Coded</b>	No	No	No	No	No	No	No
<b>Non-Coded</b>	No	No	No	No	No	No	No
<b>Human Readable Coded (Bottom)</b>	No	No	No	No	No	No	No
<b>1D Barcoded (Side)</b>	Yes	Yes	No	Yes	Yes	No	Yes
<b>Human Readable Coded (Side)</b>	Yes	Yes	Yes	Yes	Yes	Yes	Yes
<b>Capping Options</b>	Screw Cap	Screw Cap	Screw Cap	Screw Cap	Screw Cap	Screw Cap	Screw Cap
<b>Outer Diameter</b>	8.8mm	8.8mm	16.3mm	13.0mm	13.0mm	16.3mm	16.3mm
<b>Tube Height</b>	30.0mm	48.0mm	16.0mm	30.0mm	41.0mm	23.0mm	48.0mm
<b>Tube Height with Push Cap</b>	31.4mm	49.4mm	N/A	N/A	N/A	N/A	N/A
<b>Tube Height with Screw Cap</b>	33.5mm	51.5mm	19.5mm	33.5mm	44.5mm	26.5mm	51.5mm
<b>Available Precapped</b>	Yes	Yes	Yes	Yes	Yes	Yes	Yes
<b>Twist-lock</b>	Yes	Yes	Yes	Yes	Yes	Yes	Yes
<b>Snap Tube Option</b>	No	No	No	No	No	No	No
<b>Sterilization Option</b>	Yes	Yes	Yes	Yes	Yes	Yes	Yes
<b>DNase/RNase free</b>	Yes	Yes	Yes	Yes	Yes	Yes	Yes
<b>Made in clean room</b>	Yes	Yes	Yes	Yes	Yes	Yes	Yes
<b>Min. Temperature**</b>	VP LN2	VP LN2	VP LN2	VP LN2	VP LN2	VP LN2	VP LN2
<b>Availability</b>	Bulk, Rack	Bulk, Rack	Bulk, Rack	Bulk, Rack	Bulk, Rack	Bulk, Rack	Bulk, Rack



**Remember:** the hybrid tubes work extremely well with the laser marking systems from AFYS3G. Examples of tubes laser-etched by the Lambda576 can be seen to the left.

STORAGE CAPS

## INTERNAL THREAD SCREW CAPS

For sealing internally-threaded screw cap tubes for ultra-low temperature storage

### STANDARD SCREW CAPS (INTERNAL THREAD)

- Made from polypropylene with high-quality silicon O-ring
- Compatible with Micronic screw cap tubes in 96, 48, or 24-well format from 0.50ml to 6.00ml in size
- Low profile screw caps save up to 33% of freezer space
- Available in 12 colors: grey, white, yellow, orange, red, pink, purple, blue, light blue, green, light green, black
- Resistant to chemical solvents
- Storage temperature range: Vapor phase LN2 to +140°C



Also Available: the CS100 Screw Cap Recapper from Micronic for manually decapping individual screw cap tubes.

### LOW PROFILE SCREW CAPS

- Made from polypropylene with high-quality silicon O-ring
- Compatible with the following Micronic screw cap tubes in 96-well format: 0.50ml, 0.75ml, 1.10ml, 1.40ml, 2.00ml
- Saves up to 33% of freezer space
- Available in 12 colors: grey, white, yellow, orange, red, pink, purple, blue, light blue, green, light green, black
- Resistant to chemical solvents
- Storage temperature range: Vapor phase LN2 to +100°C



### SCREW CAP ULTRA

- Made from polypropylene
- Silicon O-ring falls in tube, sealing it with a "hard" stop
- Optimally designed for automated and manual handling
- Compatible with the following Micronic screw cap tubes in 96-well format: 0.50ml, 0.75ml, 1.10ml, 1.40ml, 2.00ml
- Available in 4 premium colors: red, blue, light green, yellow
- Resistant to chemical solvents
- Storage temperature range: Vapor phase LN2 to +100°C



## INTERNAL THREAD PUSH CAPS

For securely sealing push cap tubes during long-term cryogenic storage

### TPE CAPCLUSTER-96

- Made from thermo plastic elastomer
- Can be used to seal entire racks of 96 tubes at once; after sealing a rack of tubes, the foil backing can be removed to leave each tube individually capped
- Compatible with **both internal and external thread tubes** in 96-well format from Micronic
- Multi-pierceable without losing seal integrity
- Resistant to chemicals
- Storage temperatures ranging from -80°C to +100°C (without foil)
- Available in 13 colors: natural, black, grey, white, yellow, orange, red, pink, purple, blue, light blue, green, light green
- Also available with split septum to pierce with pipette tip
- RNase, DNase, pyrogen free



Also Available: automated TPE decapping options with the CP620 Push Cap Decapper from Micronic.



PUSH CAP DECAPPING OPTIONS AVAILABLE!

### TPE CAPMAT-96

- Made from thermo plastic elastomer
- Can be used to seal entire rack of 96 tubes at once; unlike TPE capcluster, tubes capped with TPE capmat **cannot** be individually removed from rack—all capped together
- Compatible with **both internal and external thread tubes** in 96-well format from Micronic
- Multi-pierceable without losing seal integrity
- Storage temperatures ranging from -80°C to +100°C
- Available in 8 colors: natural, grey, yellow, red, pink, blue, light green, black
- Also available: capmat with split septum
- RNase, DNase, pyrogen free



Also Available: TPE Capband-8, strips of TPE caps available in capmat format.



STORAGE CAPS

EXTERNAL THREAD SCREW CAPS

Designed with a triple-start thread for the most optimal sealing quality

STANDARD SCREW CAPS

- Made from polyethylene
- Have triple start thread for optimal sealing quality for long-term sample storage and preservation at ultra-low temperatures
- Designed with unique lock when sealed to prevent screw cap from overturning
- Compatible with the following 96-well format tubes from Micronic: 0.30ml, 0.40ml, 0.75ml, 0.80ml, 1.40ml, 2.00ml
- Compatible with the following 48-well format tubes from Micronic: 1.00ml, 2.00ml, 3.00ml, 4.00ml
- Compatible with the following 24-well format tubes from Micronic: 1.50ml, 3.00ml, 3.50ml, 6.00ml
- Available in 12 colors: grey, white, yellow, orange, red, pink, purple, blue, light blue, green, light green, black
- Storage temperatures ranging from Vapor Phase LN2 to +100°C
- Resistant to chemicals
- RNase, DNase, pyrogen free



Also Available: the CS100 Screw Cap Recapper for manually decapping individual screw cap tubes.

EXTERNAL THREAD PUSH CAPS

- Made from thermo plastic elastomer
- Available in capmat and capcluster format
- Can be used to seal entire racks of 96 tubes at once; leaves tubes individually capped
- Compatible with the following external thread tubes in 96-well format from Micronic: 0.30ml, 0.40ml, 0.75ml, 0.80ml, 1.40ml, 2.00ml
- Have all the same qualities as TPE Capcluster-96 for internal thread tubes



MICRONIC ULT STORAGE RACKS

For sample storage at ultra-low temperatures

STORAGE RACKS



	Micronic 96-1	Micronic 96-Q1	Micronic 96-2	Micronic 96-3	Micronic 96-4	Micronic 96-5
<b>Rack Material</b>	Polycarbonate	Polycarbonate	Polycarbonate	Polycarbonate	Polycarbonate	Polycarbonate
<b>Rack Capacity</b>	96 tubes	96 tubes	96 tubes	96 tubes	96 tubes	96 tubes
<b>Compatible Tubes</b>	0.30ml, 0.40ml, 0.50ml	0.50ml	0.75ml	0.80ml, 1.10ml	1.40ml	2.00ml
<b>Compatible Thread</b>	internal/external	internal	internal/external	internal/external	internal/external	internal/external
<b>Rack Height, No Cover</b>	12.0mm	16.0mm	19.0mm	22.7mm	30.0mm	41.0mm
<b>Tube Height in Rack, No Cap or Rack Cover</b>	17.4mm (0.30ml) 22.8mm (0.40ml) 19.5mm (0.50ml)	19.5mm	27.0mm (internal) 31.0mm (external)	35.8mm (0.80ml) 37.5mm (1.10ml)	45.0mm (internal) 49.0mm (external)	60.0mm (internal) 63.8mm (external)
<b>Height w/ Low Cover</b>	23.8mm	30.8mm	30.8mm	41.5mm	48.8mm	66.8mm
<b>Height w/ High Cover</b>	30.8mm	N/A	37.8mm	48.5mm	55.8mm	74.3mm
<b>Available Barcoded</b>	Yes	Yes	Yes	Yes	Yes	Yes
<b>Twist-lock</b>	Yes	Yes	Yes	Yes	Yes	Yes
<b>Sterilization Option</b>	Yes	Yes	Yes	Yes	Yes	Yes
<b>DNase/RNase Free</b>	Yes	Yes	Yes	Yes	Yes	Yes
<b>Sure Shot Design</b>	No	No	No	No	No	No
<b>Rack Locking System</b>	Yes	Yes	Yes	Yes	Yes	Yes
<b>Autoclavable**</b>	No	No	No	No	No	No
<b>Class 7 Clean Room</b>	Yes	Yes	Yes	Yes	Yes	Yes
<b>Chemical Resistance</b>	++/+	++/+	++/+	++/+	++/+	++/+



	Micronic 48-1	Micronic 48-2	Micronic 48-3	Micronic 48-4	Micronic 24-1	Micronic 24-2	Micronic 24-4
<b>Rack Material</b>	Polycarbonate	Polycarbonate	Polycarbonate	Polycarbonate	Polycarbonate	Polycarbonate	Polycarbonate
<b>Rack Capacity</b>	48 tubes	48 tubes	48 tubes	48 tubes	24 tubes	24 tubes	24 tubes
<b>Compatible Tubes</b>	1.00ml	2.00ml	3.00ml	4.00ml	1.50ml, 3.00ml	3.50ml	6.00ml
<b>Compatible Thread</b>	external	external hybrid	external hybrid	internal/external	external hybrid	external hybrid	internal/external
<b>Rack Height, No Cover</b>	12.0mm	19.0mm	22.7mm	30.0mm	12.0mm	19.0mm	30.0mm
<b>Tube Height in Rack, No Cap or Rack Cover</b>	17.0mm	31.0mm	42.0mm	45.0mm (internal) 49.0mm (external)	17.0mm (1.50ml) 24.0mm (3.00ml)	31.2mm	44.0mm (internal) 49.0mm (external)
<b>Height w/ Low Cover</b>	23.8mm	N/A	N/A	N/A	23.8mm	N/A	N/A
<b>Height w/ High Cover</b>	N/A	30.8mm	41.5mm	55.8mm	30.8mm	37.8mm	55.8mm
<b>Available Barcoded</b>	Yes	Yes	Yes	Yes	Yes	Yes	Yes
<b>Twist-lock</b>	Yes	Yes	Yes	Yes	Yes	Yes	Yes
<b>Sterilization Option</b>	Yes	Yes	Yes	Yes	Yes	Yes	Yes
<b>DNase/RNase Free</b>	Yes	Yes	Yes	Yes	Yes	Yes	Yes
<b>Sure Shot Design</b>	No	No	No	No	No	No	No
<b>Rack Locking System</b>	Yes	Yes	Yes	Yes	Yes	Yes	Yes
<b>Autoclavable**</b>	No	No	No	No	No	No	No
<b>Class 7 Clean Room</b>	Yes	Yes	Yes	Yes	Yes	Yes	Yes
<b>Chemical Resistance</b>	++/+	++/+	++/+	++/+	++/+	++/+	++/+

STARTER PACKS

STARTER PACKS WITH PUSH CAPS

For getting started with 2D coded tubes



**Basic Starter Pack**

- 10 racks of **0.75ml** or **1.40ml** tubes
- 10 capclusters
- DT500 Tube Reader
- DT300 Tube Reader
- Manual Decapper-8
- Manual Decapper-1



**Standard Starter Pack**

- 10 racks of **0.75ml** or **1.40ml** tubes
- 10 capclusters
- DR500 Rack Reader
- Manual Decapper-8
- Manual Decapper-1



**Premium Starter Pack**

- 40 racks of **0.75ml** or **1.40ml** tubes
- 40 capclusters
- DR505 Rack Reader
- Manual Decapper-8
- Manual Decapper-1



**Premium+ Starter Pack**

- 40 racks of **0.75ml** or **1.40ml** tubes
- 40 capclusters
- DR700 Rack Reader
- DR700 Side Reader
- CP600 Capper
- Manual Decapper-8
- Manual Decapper-1

STARTER PACKS WITH SCREW CAPS

For getting started with 2D coded tubes



**Basic Starter Pack**

- 10 racks of **0.75ml** or **1.40ml** tubes
- 960 screw caps
- DT500 Tube Reader
- DT300 Tube Reader
- Manual Screw Cap Remover



**Standard Starter Pack**

- 10 racks of **0.75ml** or **1.40ml** tubes
- 960 screw caps
- DR500 Rack Reader
- Manual Screw Cap Remover



**Advanced Starter Pack**

- 40 racks of **1.00ml, 3.00ml, 3.50ml, or 4.00ml** tubes precapped with screw caps
- DR505 Rack Reader
- DR505 Side Reader



**Premium Starter Pack**

- 40 racks of **0.75ml** or **1.40ml** tubes
- 3840 Screw Caps
- DR505 Rack Reader
- CS500 Recapper
- Manual Screw Cap Remover

TUBE TRIAL PACKS

For testing your application with Micronic tubes

FEATURES AND BENEFITS

- Includes one unit (10 racks) of pre-racked 2D Data-Matrix coded tubes in the following sizes: 0.30ml, 0.40ml, 0.50ml, 0.75ml, 0.80ml, 1.10ml, or 1.40ml
- Includes enough screw caps or TPE push caps for capping all 10 racks of tubes
- Tubes available in Micronic Ultra Low Temperature (ULT) racks, based on the global recognized ANSI/SLAS standards for storage racks
- Micronic 2D Data-Matrix codes are permanently laser-etched on tubes and 1D barcodes are permanently laser-etched on racks
- 100% quality control on all 2D Data-Matrix codes (readability and uniqueness)
- Micronic labware free of any detectable RNase or DNase contamination; endotoxin level of produced and packaged labware is limited to an acceptable minimum (<0.01 EU/ml)
- Micronic labware manufactured and assembled in-house in a NEN-EN-ISO 14644-1 Class 7 certified clean-room environment
- Sterilization using gamma irradiation or Eto treatment, precapped tubes, customized 2D Data-Matrix or 1D rack barcode

TEST OUT THE MICRONIC LABWARE!



DID YOU KNOW...

Micronic also offers Hybrid Tube Small Packs featuring 10 racks of hybrid tubes precapped with grey screw caps. The following tube sizes are available: 0.75ml and 1.40ml tubes in 96-well format; 2.00ml and 3.00ml tubes in 48-well format; 1.50ml, 3.00ml, and 6.00ml tubes in 24-well format.

The Micronic hybrid tubes include 4 unique coding concepts: a human-readable code, a 1D barcode, a 2D Data-Matrix code on the bottom of the tube, and a white blank surface for researchers to write or laser-etch their sample IDs. The hybrid tubes are compatible with the Micronic Screw Cap Recappers, Micronic Code Readers, Lambda8 and Lambda576 laser markers from AFYS3G, and more.



(DE)CAPPERS

## SCREW CAP RECAPPER CS500

A semi-automated device that can cap and decap entire rows of tubes in 5 seconds

### FEATURES AND BENEFITS

- Cap, decap, or recap a row of 8 tubes (CS500 model), 6 tubes (CS510 model) or 4 tubes (CS520 model) 10 times faster than by hand
- Minimizes sample evaporation and improves productivity
- Ensures that each screw cap is reproducibly tightened both securely and uniformly
- No battery charging required
- Compatible with other brands of internal and external thread tubes like Thermo, FluidX and LVL
- Can be paired with the Micronic Docking Station to make tube recapping even more efficient
- Includes 1-year warranty



**Also Available:** the Micronic CS500 Docking Station which can be used to cap a whole rack of 96 tubes in one minute.

## SCREW CAP RECAPPER CS700

An automated device that can cap, decap, and recap an entire rack of tubes in 30 seconds

### FEATURES AND BENEFITS

- Cap, decap, or recap a rack of 96 tubes (CS700 model), 48 tubes (CS710 model), or 24 tubes (CS720 model) in a single action
- Can be used as stand-alone instrument or be integrated into fully automated lab environment
- Easy-to-use graphical touch screen can be used to select any rack without the need for different tube size adapters
- Uses precisely determined torque value for optimal sealing quality, minimizing sample evaporation and maximizing the integrity of samples
- Compatible with other brands of internal and external thread tubes like Thermo, FluidX and LVL



MODELS  
AVAILABLE  
FOR ALL  
TUBE SIZES!

## CP400 MANUAL PUSH CAP CAPPER

For manually capping racks of push cap tubes

(DE)CAPPERS

### FEATURES AND BENEFITS

- A cost-effective way to uniformly cap an entire rack of 96 tubes in a single action
- Can be used to seal full or partially full racks
- Compatible with the complete range of Micronic TPE or EVA style capmats, capbands and capclusters
- Also compatible with other brands of storage tubes and racks
- Can repeatedly and reliably cap tubes (up to 1.40ml) in ANSI/SLAS format racks up to a maximum height of 48mm



## CP600 & CP610 ELECTRIC PUSH CAP CAPPERS

For capping racks of push cap tubes in less than 7 seconds

### FEATURES AND BENEFITS

- Can be used to cap the following Micronic Push Cap tubes in 96-well format: 0.50ml, 0.75ml, 1.10ml, 1.40ml, 2.00ml, 2.50ml
- Operates without any buttons; place the caps on the tubes, place the rack on the drawer & push the drawer inside the unit
- Can be used to seal full or partially full racks
- CP600 works with tube sizes up to 1.40ml and CP610 works with tube sizes up to 2.50ml



## CP620 AUTOMATED PUSH CAP DECAPPER

For decapping racks of push cap tubes in less than 8 seconds

### FEATURES AND BENEFITS

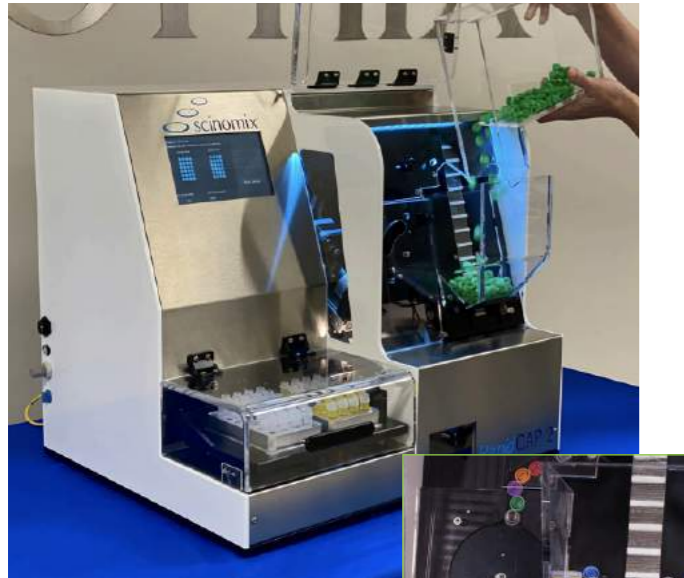
- Can be used to decap the complete range of Micronic 96-well format tubes with internal thread (up to 1.40ml)
- Minimizes cross-contamination
- Operates as stand-alone unit or can be integrated into a fully-automated environment
- Simple and safe operation



(DE)CAPPERS

## SCINOMIX RAPIDCAP<sub>2</sub>

For capping and decapping screw cap tubes between 0.50ml and 2.00ml in size



### FEATURES AND BENEFITS

- (De)capping throughput: 4.75 seconds per tube
- User-friendly, touchscreen software
- Can process any cap color
- Cap color detection: filters out wrong cap color which might represent specific sample in lab
- Plug and play system; configured to user's needs
- Cap hopper holds approximately 1,000 caps to increase walk-away time
- Designed to hold 2 SBS footprint racks; custom rack adapters available for other tube/rack sizes
- Flexibility to integrate into third party automation
- Small, bench-top device

**Capper Includes:** Cap color detection feature to filter out wrong cap colors.



## SIGMA<sub>96</sub> SCREW CAP RECAPPER

For capping and decapping full racks of 96-well format screw cap tubes

### FEATURES AND BENEFITS

- Caps and decaps full rack of tubes in a single action
- (De)capping throughput: 30 seconds
- Models also available for 24-well (Sigma24) and 48-well (Sigma48) format screw cap tubes
- Compatible with screw cap tubes from a variety of brands like Micronic, FluidX, LVL Technologies, and Thermo Matrix
- Precise torque value set for optimal sealing quality
- Intuitive touch screen interface
- Equipped with an interface (API) for integration into fully-automated lab environments e.g. can work in sync with liquid handlers
- Includes tube detection sensor: will not cap and decap tubes if they're not properly positioned in the rack, which will prevent damaging samples



EASILY  
INTEGRATE  
WITH OTHER  
EQUIPMENT!

## VARIABLE TEMPERATURE SEALER

Stable heat-sealing performance for reliable hermetic sealing of microplates

HEAT SEALER



### FEATURES AND BENEFITS

- Compatible with 96-, 384-, and 1536-well microplates and deep well PCR plates
- Adjustable sealing temperature and time
- Unique ergonomic design for easy, effective and reliable seal
- Audible alarm indicates sealing completion and prevents overheating
- Fast warm-up time
- Adapters available for most plates
- Recommended range of foils and PCR films available
- Prevents sample loss through evaporation and cross-contamination between wells
- Wide range of temperature settings
- Applications include: very low temperature storage with solvent resistance, sample integrity, secure long-term sample storage, PCR with water thermal cyclers
- Sealing temperature range: 125°C to 200°C in 1°C increments
- Sealing time range: 1 to 9 seconds in 0.5 second increments
- Warm up time (up to 170°C): < 10 minutes
- Dimensions (in mm): 22 W x 325 D x 425 H
- Weight: 7.2kg
- Power supply: 110 to 120 / 220 to 230 VAC nominal



**Also available:** The MicroTS Manual Heat Sealer for sealing small quantities of plates. Perfect for use in low to medium throughput laboratories where space is limited but speed and reliability are paramount.

## TECHNICAL SERVICE

Preventative maintenance plans to keep your equipment in excellent condition

KEEP YOUR  
EQUIPMENT  
IN TOP  
SHAPE!



By investing in a preventative maintenance plan, you can make sure your laboratory equipment functions properly every day of the year. Regardless of your location, our service technicians will install, demo, and repair your equipment on-site or virtually. Need a preventative maintenance plan? Can't fix an issue on your own? Contact us at [info@nbsscientific.co.uk](mailto:info@nbsscientific.co.uk) to discuss your laboratory's needs. We'll help you solve the issue so you and your team can get back up and running in no time.

## CORPORATE SOCIAL RESPONSIBILITY

Our efforts to promote a more sustainable future

At NBS Scientific, we try our best to promote a better, more sustainable world by implementing different sustainability efforts in the office. We also contribute to organizations that advocate for the health and welfare of animals and human beings. Listed below are some of the initiatives we've spearheaded in-house to create a more sustainable work environment.

### REDUCE WASTE



- Communicate via email & only print forms and papers when absolutely necessary
- Switch off all lights when not in use
- Reduce wooden pallet waste by donating to individuals and companies who can reuse or repurpose them

### REUSE MATERIALS



- Reuse packaging from shipments when possible, including boxes, foam, and plastic air bubbles, and recycle any boxes damaged beyond use
- When possible, use sustainable cleaning products in recyclable containers

### RECYCLE GOODS



- Emphasize recycling as a company-wide goal; use recycling bins for plastics, paper, cardboard, and metals
- Recycle empty ink cartridges
- Recycle electronics when necessary at local electronic drop-off locations

## NEED A QUOTE? HAVE QUESTIONS? NEED MORE INFO?

There are three easy ways to contact us



724-941-6411



[INFO@NBSSCIENTIFIC.CO.UK](mailto:INFO@NBSSCIENTIFIC.CO.UK)



[NBSSCIENTIFIC.CO.UK](http://NBSSCIENTIFIC.CO.UK)

**Please Note:** due to the COVID-19 pandemic, we have limited staff in the office. If you cannot reach us by phone, please send us an email with your questions.

## DID YOU KNOW...

Micronic proudly presents a more sustainable choice for sample storage with their 1.40ml and 4.00ml tubes, which were recently verified by My Green Lab. These tubes now carry the ACT label—a premier eco-nutritional label for laboratory products that emphasizes Accountability, Consistency, and Transparency. ACT labels make it easy to choose safe and sustainable products. Reading the ACT label (also known as the Environmental Impact Factor Label) is simple: the lower the score, the lower the impact on the environment in terms of manufacturing, energy and water use, packaging, and end-of-life.

ACT.	
Accountability, Consistency, Transparency	
The Environmental Impact Factor Label	
Micronic 1.40 ml 20 Data-Matrix Coded Screw Cap Tubes Internal Thread in 96-4 Rack, MPS2551-220	
Lelystad, The Netherlands	
<b>Manufacturing</b>	
Manufacturing Impact Reduction	3
Renewable Energy Use	No
Responsible Chemical Management	1
Shipping Impact	8.6
Product Content	10
Packaging Content	5
<b>User Impact</b>	
Energy Consumption	NA
Water Consumption	NA
Lifetime Rating	6
<b>End of Life</b>	
Packaging	4
Product	8
<b>Environmental Impact Factor</b>	45.6
<b>Label Valid Through</b>	February 2021

ACT.	
Accountability, Consistency, Transparency	
The Environmental Impact Factor Label	
Micronic 4.00 ml 20 Data-Matrix Coded Screw Cap Tubes External Thread in 48-4 Rack, MPS2810-Y28	
Lelystad, The Netherlands	
<b>Manufacturing</b>	
Manufacturing Impact Reduction	3
Renewable Energy Use	No
Responsible Chemical Management	1
Shipping Impact	8.6
Product Content	10
Packaging Content	5
<b>User Impact</b>	
Energy Consumption	NA
Water Consumption	NA
Lifetime Rating	6
<b>End of Life</b>	
Packaging	4
Product	7.8
<b>Environmental Impact Factor</b>	45.4
<b>Label Valid Through</b>	February 2021