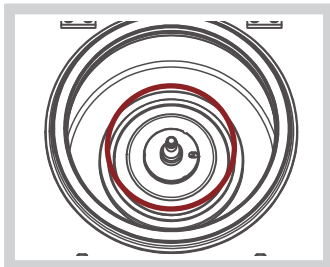


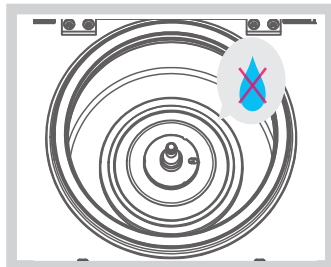
Precaution before Operating the Centrifuge

HIGH SPEED REFRIGERATED CENTRIFUGE
CR-1730R



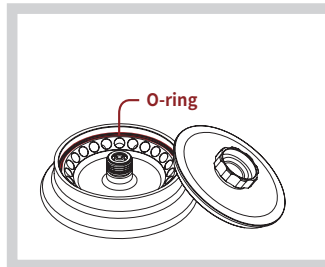
Motor Shaft & Rotor

Clean the motor shaft.
Remove the foreign substances
not to cause any vibration



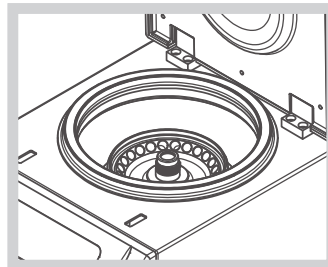
Open the lid after every use

Keep the instrument dry after use
for prolonged durability.
Take the rotor out and clean the shaft
with the dry soft cloth.



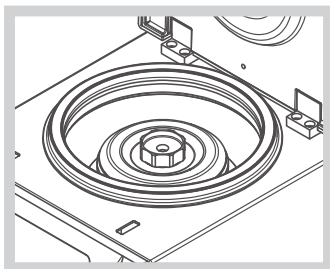
O-ring Maintenance

Check the O-ring is put on the right place
of the rotor. Make the rotor lid loose when
not using the centrifuge which is for pro-
longed durability of O-ring.



Rotor checking

Check the rotor is installed correctly
and is sitting firmly on the motor shaft.



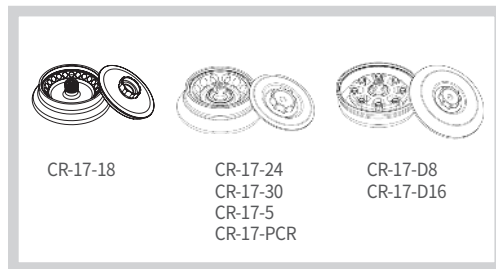
Snap fit button checking

Close the snap fit button
with aligning with the motor shaft.



Loading tubes

Load the sample tubes symmetrically

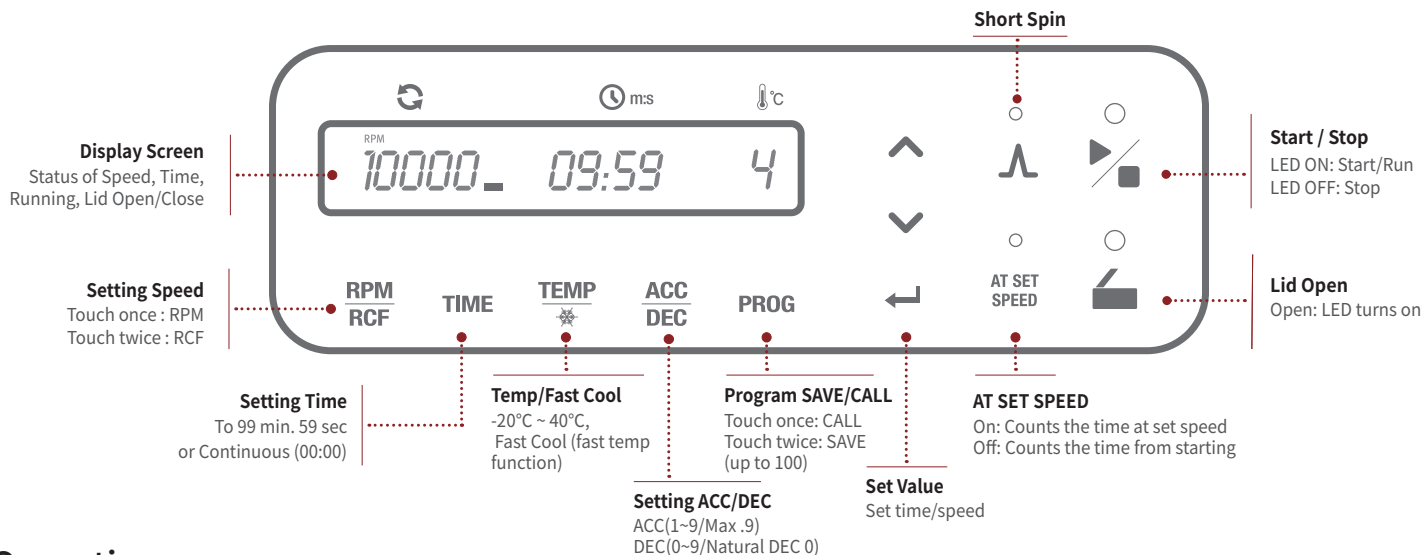


Interchangeable Rotors

The centrifuge offers multiple rotor options and can be changed
rotors in the described

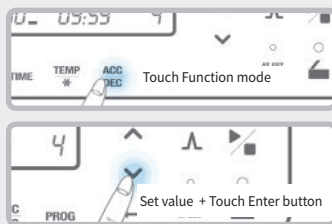
Display & Control Panel Quick Guide

HIGH SPEED REFRIGERATED CENTRIFUGE
CR-1730R

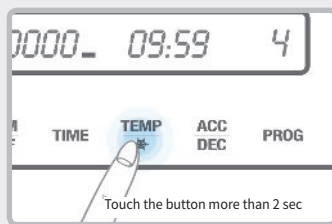


Operation

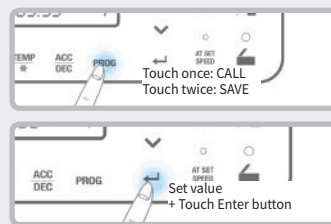
Function Selection



Fast Cool(fast temp)



PROG Save/Call



Start / Stop

